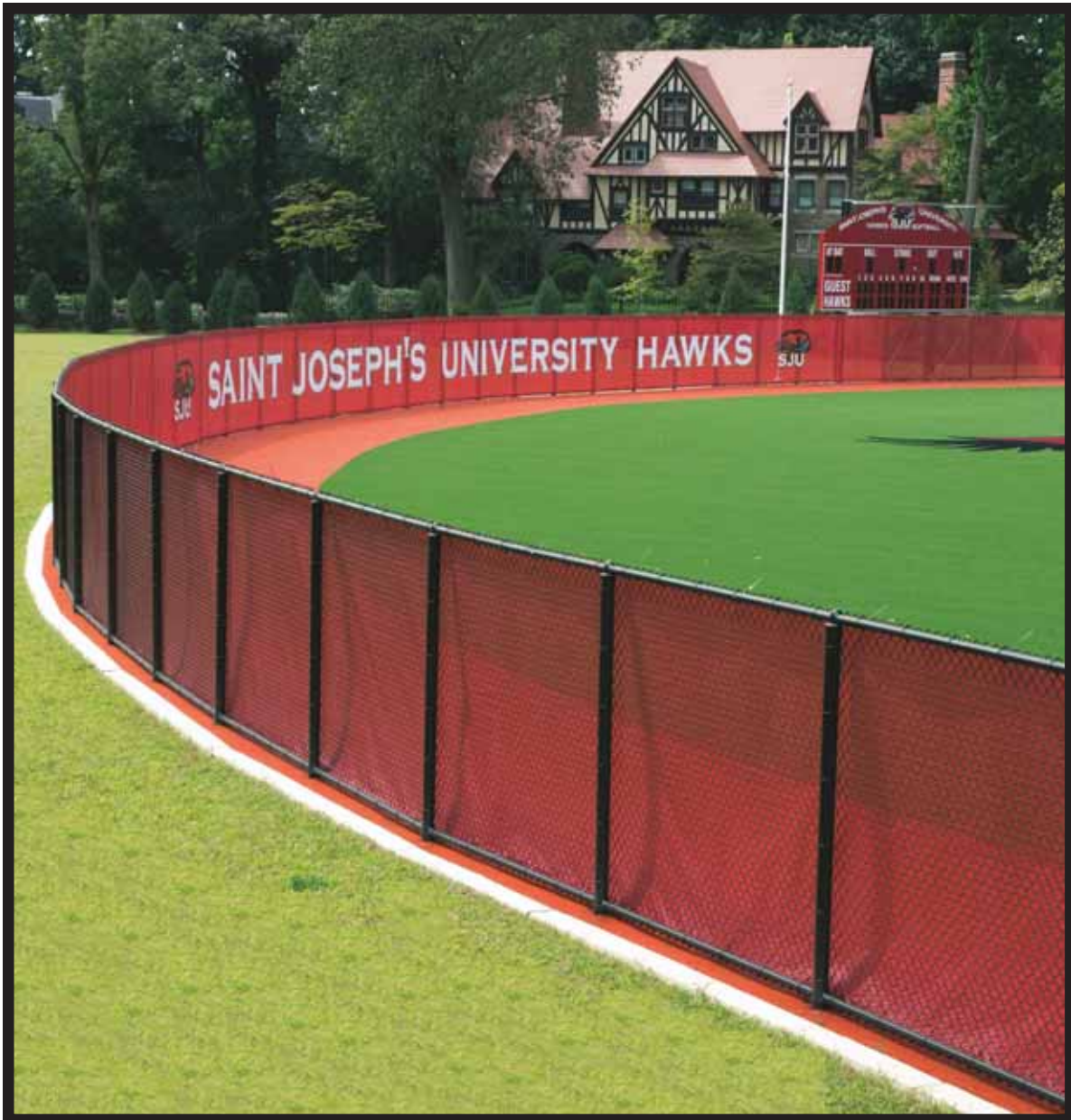


WINDSCREEN CATALOG

	PAGE(S)
Windscreens	1-10
Letters, Numbers, & Logos on Colored Windscreen	11
Distance Banners	12
Tuff Print™ on White Windscreen	13-15
Dugout Shelters	16



ARMOR MESH WINDSCREENS

The most durable and long lasting windscreens!

Custom made to your dimensions!

NEW ARMORMESH HEAT-SEALED HEMS!

BETTER HEAT SEALED

GOOD STITCHED

Armor Mesh (VCP 16x16) *Actual colors may vary.*

<i>Dark Green</i>	<i>Navy</i>	<i>Royal Blue</i>	<i>Carolina Blue</i>	<i>Red</i>	<i>Kelly Green</i>	<i>Maroon</i>	<i>White</i>	<i>Purple</i>	<i>Yellow</i>	<i>Orange</i>	<i>Black</i>	<i>Gray</i>

ARMOR MESH FEATURES:

- Heaviest-duty windscreen available—14 oz/ sq. yd. (VCP16x16)—with a 5-year pro-rated warranty for UV-resistance.
- Extrusion vinyl coated woven polyester with excellent tear strength.
- The perfect balance of privacy and wind protection (75% wind block)
- 13 colors: Dark Green, Navy, Royal Blue, Carolina Blue, Red, Kelly Green, Maroon, White, Purple, Yellow, Orange, Black, or Gray.
- Significant abrasion resistance—up to six times more than vinyl coated windscreen!
- Strong heat-sealed hems —no black webbing or stitches—cleaner looking & stronger!
- Made from 6'+ & 9'+ roll stock. 9'+ has a heat seal 3' from bottom.
- Grommets at 18" intervals. 12" intervals optional.
- Horizontal lacing lip required for windscreens over 6'H.

Over 5,000 SF

64¢/sq. ft

Over 2,500 SF

64.5¢/sq. ft

Under 2,500 SF

70¢/sq. ft

MINIMUM CHARGE FOR SMALL PANELS IS \$15.

PARTAC PEAT CORPORATION
ONE KELSEY PARK, GREAT MEADOWS, NEW JERSEY 07838

ALL PRICES SUBJECT TO CHANGE & AVAILABILITY PLUS SHIPPING
800-247-BEAM (2326) • (908) 637-4191 • FAX (908) 637-8421
www.beamclay.com • sales@beamclay.com

VINYL COATED POLYESTER WINDSCREENS In 15 Colors! Custom made to your dimensions!

Heat-sealed seams - No Black Hem or Stitches - Cleaner Looking & Stronger - Rust Resistant Brass Grommets Every 18" on all 4 Sides.



Logos and advertising printable on vinyl.



Forest Green, Royal Blue, Black, Red, Navy Blue, Orange, Maroon, Carolina Blue, Brown, Tan, Purple, Kelly Green, White, Gray, Yellow

Actual colors may vary.

Vinyl Coated Polyester Mesh

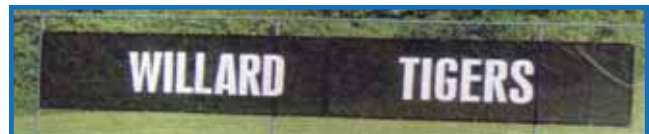
#VCM9x12—Open Mesh, approximately 80% wind block, heavy-duty (8.2 oz./sq. yd.) 3-year pro-rated warranty for UV-resistance

6'H

Over 5,000 sq. ft.	51¢/SF
Over 2,500 sq. ft.	51.5¢/SF
Under 2,500 sq. ft.	56¢/SF
Black Plastic Ties 8" UV Resistant Pack of 100	\$10/pack



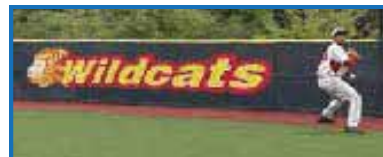
- Made from 6'+ & 9'+ roll stock. 9'+ has a heat seal 3' from bottom.
- Horizontal lacing lip required for windscreens over 6'H.
- For special features (Lacing Lips, Air Vents, Extra Grommets, Two Color Panels) See Page 5



HOW LONG IS YOUR OUTFIELD FENCE?

Outfield fences can be symmetrical (the same distance from home plate to the fence at all points) or like major league parks with different distances to center field and mid-field. The following chart provides approximate outfield fence lengths assuming a center field depth 10% - 15% deeper than the foul lines. If symmetrical, you may approximate your fence length by multiplying 1.57 by the average distance from home plate to the fence.

DISTANCE TO FOUL POLE	APPROX. LENGTH OF FENCE
180 feet	300 feet
200 feet	360 feet
225 feet	395 feet
250 feet	435 feet
290 feet	490 feet
300 feet	515 feet
315 feet	550 feet

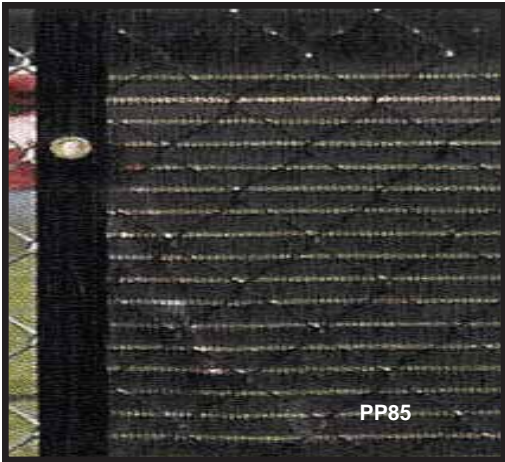


WINDSCREEN LETTERING

Block-style letters or numbers factory applied to your windscreen order. Select white, black, or yellow letters or numbers.
See page 9

MINIMUM CHARGE FOR SMALL PANELS IS \$15.

ALL PRICES SUBJECT TO CHANGE & AVAILABILITY PLUS SHIPPING



PREMIUM POLY WINDSCREENS

Custom made to your dimensions!

Reinforced, 6-ply, double sewn and banded, 1-1/2" black vinyl borders with rust resistant brass grommets every 18" on all 4 sides. Horizontal lacing lip required for windscreens over 6'H.

PP85 Open Woven Polypropylene, 85% Wind Block (5.0 oz./sq. yd.). Available in Dark Green or Black. **Made from 6'+ and 9'+ roll stock.** 4-year pro-rated warranty

6'H	
Over 5,000 SF	62¢/SF.
Over 2,500 SF	62.5¢/SF
Under 2,500 SF	67¢/SF

PP100 Closed Woven Polypropylene, 96% Wind Block (5.6 oz./sq. yd.). Available in Dark Green or Black. **Made from 6'+ and 9'+ roll stock.** 4-year pro-rated warranty

6'H	
Over 5,000 SF	64¢/SF
Over 2,500 SF	64.5¢/SF
Under 2,500 SF	70¢/SF

GM90 (Black only) Closed Woven Polypropylene, 90% Wind Block (7.7 oz./sq. yd.). **Made from 6'+, 9'+ or 12'+ roll stock.** 4-year pro-rated warranty

6'H	
Over 5,000 SF	47¢/SF
Over 2,500 SF	47.5¢/SF
Under 2,500 SF	52¢/SF

TPE86 Open Woven Polyethylene, 84% Wind Block (5.5 oz./sq. yd.). Available in Forest Green or Black. **Made from 6'+ or 9'+ roll stock.** 4-year pro-rated warranty

6'H	
Over 5,000 SF	54¢/SF
Over 2,500 SF	54.5¢/SF
Under 2,500 SF	59¢/SF

TPE99 Closed Woven Polyethylene, 88% Wind Block (6.2 oz./sq. yd.). Available in Forest Green or Black. **Made from 6'+ or 9'+ roll stock.** 4-year pro-rated warranty

6'H	
Over 5,000 SF	59¢/SF
Over 2,500 SF	59.5¢/SF
Under 2,500 SF	64¢/SF

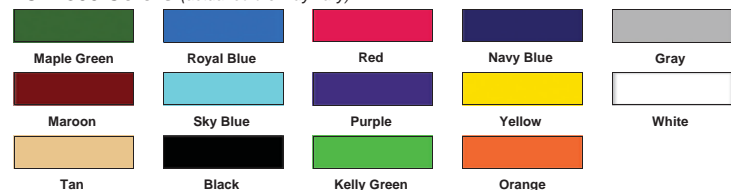
SOLID VINYL...FOR COMPLETE PRIVACY

Now With Heat-Sealed Hems - Stronger and Cleaner Looking - No Black Hem or Stitches.

VCP1800 Solid 18 oz. vinyl windscreen provides a 100% barrier to wind and offers complete privacy. Available in Maple Green, Royal Blue, Red, Navy Blue, Grey, Maroon, Sky Blue, Purple, Yellow, White, Tan, Black, Kelly Green, and Orange. Logos & advertising printable on vinyl. Made from 5'+ roll stock. Rust resistant brass grommets every 18" on all 4 sides. 4-year pro-rated warranty. Horizontal lacing lip required for windscreens over 6'H.

	5' Stock
Over 5,000 sq.ft.	66¢/SF
Over 2,500 sq.ft.	66.5¢/SF
Under 2,500 sq.ft.	74¢/SF

VCP1800 Colors (actual colors may vary)



MINIMUM CHARGE FOR SMALL PANELS IS \$15.

ALL PRICES SUBJECT TO CHANGE & AVAILABILITY PLUS SHIPPING

BEAM CLAY®

More Custom Windscreens



PRINTED WINDSCREEN PANELS

Picture your team name and logo on your mesh or solid vinyl panel!

You can dress up your ball field by displaying your team's name and logo, recognizing team accomplishments and even gaining sponsorships.



One or two-color lettered panels on mesh windscreen or solid vinyl fabric.

BATTER'S EYE WINDSCREENS

Batters, keep your eye on the ball!

Provide the best hitting background, so batters can keep their eye on the ball! Custom made to the dimensions you require.

Features:

- Heavy-duty reinforced hems with brass grommets at 18" intervals
- Durable woven polypropylene fabrics (recommended)
- Lacing lips sewn horizontally every 6', not just around the perimeter.

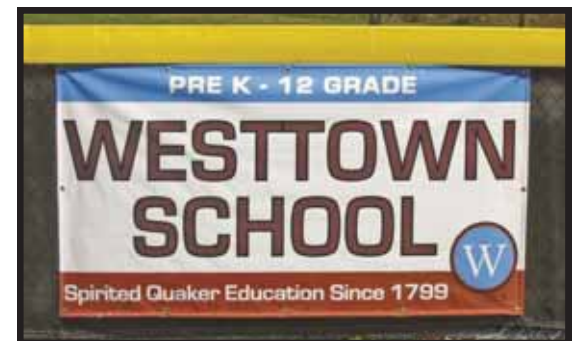


Boston Red Sox training field, Ft. Meyers, FL

BANNERS—DIGITALLY PRINTED

Customize designs for multiple locations!

It is easy and affordable to boost team spirit, raise funds through sponsors and make your field stand out! Digitally printed banners allow you to customize your designs with multiple colors and shading. Choose from mesh or solid vinyl fabrics for a banner of any size. We can reproduce your logo precisely from your digital image — just send us your file and we'll do the rest!



CUSTOM DISTANCE BANNERS

Outfield Distance Markers

Digitally printed on 13 oz. reinforced solid vinyl fabric. Choose from 14 standard banner and number colors: Maple Green, Royal Blue, Red, Navy, Gray, Maroon, Sky Blue, Purple, Yellow, White, Tan, Black, Kelly Green, or Orange. Custom colors available.



BASEBALL
&
SOFTBALL
BANNERS

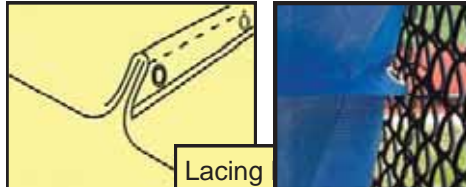
ALL PRICES SUBJECT TO CHANGE & AVAILABILITY PLUS SHIPPING

CUSTOM WINDSCREENS
SPECIAL FEATURES & INSTALLATION ACCESSORIES

LACING LIP - Attaches windscreen more securely to fence.

75¢/LF

Horizontal or Vertical Lacing Lip attaches middle of windscreen to fence in addition to the four edges. Lacing Lip is 2 reinforced layers of material, folded to stick out the back, covered and double sewn or 2 layers of vinyl coated material heat-sealed edging with grommets every 18" to attach securely to fence and reduce flapping. **Lacing Lip is required sewn horizontally at center of windscreen along entire length of all windscreens over 6'H.** Check price for more than one lacing lip.



AIR VENTS, TIES & EXTRA GROMMETS

18" Diameter Half Circle Cut-Outs (without Edging, with or without flap)	\$3.50
Reinforced Air Vents - 6" H x 12" L, usually every 10'	\$6
Standard 8" UV-Resistant Black Plastic Ties , 50 lb. Breaking Strength (Packs of 100)	\$10
Heavy-Duty 8" UV-Resistant Black Plastic Ties , 120 lb. Breaking Strength (Packs of 100)	\$15
Heavy-Duty 14" UV-Resistant Black Plastic Ties , 120 lb. Breaking Strength (Packs of 100)	\$25
Grommets every 12" instead of 18"	4¢/sq.ft.
Polyester Tie Rope , Black, 1/8" x 250' Spool	\$25
Custom Cut Outs (each)	\$75
Custom Angle Cuts (each)	\$75

A lacing lip prevents windscreen from billowing and breaking away, ensuring longer life.
>Standard on all screens over 6' high.
>Vinyl coated windscreen is heat-sealed and stronger
>Polypropylene & Polyethylene windscreen is banded and sewn



TWO COLOR WINDSCREEN PANELS

VCM 9x12
 2 different color panels joined with heat-sealed seams.
 Top/Bottom (Horizontal Seam, 12" high minimum)
 Side x side (vertical seam, minimum 6' long panels)



**Available for
 ArmorMesh, VCM9x12 &
 VCP1800 at 30%
 additional charge.**

Measurements:

Our windscreens are custom made to your dimensions. Measure carefully.

When ordering, please have dimensions ready for each section of windscreen, including gates. There is no extra charge for these smaller pieces. We recommend leaving 6"-12" open at bottom for maintenance and air flow. For long runs 50'-100' pieces work best. Much longer pieces become more difficult for you to install.

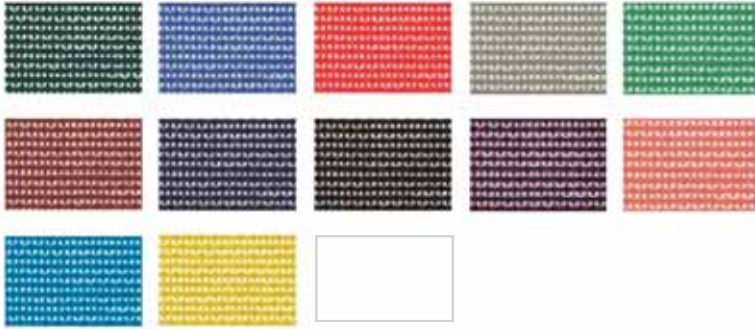
Tall Windscreens:

- When 2 woven polypropylene rolls are used to make a taller windscreen: one material overlaps the other (and is double sewn with 2 layers of banding) to make a seam (like lacing lip w/o sticking out back and w/o grommets); whereas ArmorMesh, VCM9x12, and VCP1800 seams are heat-welded and do not require the more visible banding. Horizontal lacing lip required for windscreens over 6'H.

ALL PRICES SUBJECT TO CHANGE & AVAILABILITY PLUS SHIPPING

WINDSCREEN COLOR CHARTS

ArmorMesh Colors *(actual colors may vary)*



VINYL MESH VCM9x12 COLORS *(actual colors may vary)*



SOLID VINYL COLORS VCP1800 *(actual colors may vary)*



All our windscreens have a full manufacturer's warranty against fabric and manufacturing defects and a 3-5 year pro-rated warranty against breakdown from UV sunlight.

ALL PRICES SUBJECT TO CHANGE & AVAILABILITY PLUS SHIPPING

WINDSCREEN SPECIFICATIONS

Product Code	Fabric Type	Weight Oz./ Sq. Yd.	Percent Shade ₁	Standard Heights	Available Colors	Air Flow ₂	Tensile Strength ₃	Tongue Tear Strength ₄	UV Resistance ₅	Warranty Years ₆
Armor Mesh VCP16x16	Vinyl Coated Polyester	14.0	75%	6', 9'	12 Standard Colors	744 CFM	462 x 463	69 x 60	96%	5
VCM9X12	PVC Coated Polyester	8.2	84%	6', 9'	15 Standard Colors	340 CFM	230 x 200	100 x 110	83%	3
TPE86	100% Polyethylene	5.5	84%	6', 9'	Forest Green, Black, Royal Blue	499 CFM	292 x 143	191 x 77	87%	4
TPE99	100% Polyethylene	6.2	88%	6', 9'	Forest Green, Black	288 CFM	288 x 146	204 x 79	88%	4
PP85	100% Polypropylene	5.0	85%	6', 9'	Forest Green, Black	335 CFM	293 x 158	130 x 62	88%	4
PP100	100% Polypropylene	5.6	96%	6', 9'	Forest Green, Black	175 CFM	339 x 179	93 x 62	87%	4
GM90	100% Polyethylene	7.7	90%	6', 9', 12'	Black	240 CFM	445 x 375	185 x 100	90%	4
PSHG	100% Polyethylene	5.5	98%	44", 70", 92", 106"	Hunter Green, Black, Royal Blue	390 CFM	160 x 280	66 x 96	90%	4
VCP1800	Solid Vinyl (polyester reinforced)	18.0	100%	5', 6', 9'	14 Standard Colors	0	—	—	90%	4
Privacy Screen	(Sold in 150' rolls - cut and hang in the field)									
PS4400	100% Polyethylene	5.5	90%	44"	Hunter Green, Black, Royal Blue	390 CFM	160 x 280	66 x 96	90%	4
PS7000	100% Polyethylene	5.5	90%	70"	Hunter Green, Black, Royal Blue	390 CFM	160 x 280	66 x 96	90%	4
PS9200	100% Polyethylene	5.5	90%	92"	Hunter Green, Black, Royal Blue	390 CFM	160 x 280	66 x 96	90%	4
PS106	100% Polyethylene	5.5	90%	106"	Hunter Green, Black, Royal Blue	390 CFM	160 x 280	66 x 96	90%	4

1. Based on black color fabric - lighter colors allow more light and have lower shade values.

2. ASTM D-737

3. ASTM D-5034—force required to make a fabric tear.

4. ASTM D-5587— force required to tear fabric with a cut.

5. % of retained tensile strength after 1,000 hours.

6. Against defects in fabric and manufacturing pro-rated.

ALL PRICES SUBJECT TO CHANGE & AVAILABILITY PLUS SHIPPING



★ **Made in the USA** ★

After a decade of development...the most durable windscreen the industry has ever seen: Brand new **ExtremeScreen**. This revolutionary product unites the longevity and durability of knitted polyethylene with the beauty, stability, and feel of premium vinyl coated windscreens.

No windwhipping. Unlike most other windscreens, it does not have any coating to crack or peel.

No dry rot, even in hot moist climates. It's a polyethylene product so it will not absorb moisture, which is the primary cause of "dry rot".

Extra heavy duty edges. Both top and bottom are knitted with a heavy duty selvage edge, providing the strongest hem and grommets in the industry. All 4 sides have finished hems & grommets.

Longevity. Polyethylene simply lasts a lot longer than polypropylene or vinyl coated polyester.

Best warranty in the industry. For all the above reasons, **ExtremeScreen** has a 7 year warranty...2 years better than any other windscreen warranty.

6' High (Finished at 5'8-1/2" with hems & grommets)
9' High (Finished at 8'11-1/2" with hems & grommets & horizontal lacing lip)
Call for Quotation on Custom Sizes

\$3.85/LF
\$5.95/LF

Black and Green are standard colors. Add 10% for Navy Blue.

ALL PRICES SUBJECT TO CHANGE & AVAILABILITY PLUS SHIPPING

PARTAC PEAT CORPORATION
 ONE KELSEY PARK, GREAT MEADOWS, NEW JERSEY 07838

MATERIAL:	High Density Knitted Polyethylene
STANDARD HEIGHTS:	6' & 9'
DENSITY /OPACITY:	78%
MATERIAL WEIGHT	9.0 oz/sq-yd (ASTM-D3776)
TEAR STRENGTH	Warp 62.6 lbs/Fill 65 bs (ASTM-D 5587, Opt #1)
BREAKING STRENGTH: (Grab Method)	Warp 190 lbs/Fill 223 :bs (ASTM-D5034)
BURSTING STRENGTH:	263 psi (ASTM-D3786)
HEMS:	1.25" wide 4-ply reinforced with 18 oz vinyl
GROMMETS:	#2 brass grommets every 12"
GROMMET STRIP:	2" polypropylene binding with grommets every 18" (Standard on 9' Fabric)
WARRANTY:	7 Years

800-247-BEAM (2326) • (908) 637-4191 • FAX (908) 637-8421
 www.beamclay.com • sales@beamclay.com

STOCK WINDSCREEN ROLLS



CUT-N-HANG WINDSCREEN SAVES \$\$\$...AND IS EASY TO USE

STOCK SIZES:

OUTFIELD, COURT & PRIVACY WINDSCREEN
Inexpensive knitted (not woven) polyethylene and polypropylene rolls with reinforced edges are easy to use. Purchase by the roll and simply cut to size on site. No need for hems & grommets – raw edges won't unravel or fray. Install with plastic ties. Need air vents – cut them in the field.

HIGH-DENSITY POLYETHYLENE

With attachment holes woven into fabric every 2" with plastic tie recommended every 12"-18", 90% Wind Block (5.5 oz./sq/ yd), available in Hunter Green, Black, and Royal Blue. 4-year limited warranty

APPROX.

<p>3'8" (44") x 150' roll 550 SF For 4' Fence</p> <p>5'10" (70") x 150' roll 875 SF For 6' Fence</p> <p>7'8" (92") x 150' roll 1,150 SF For 8' Fence</p> <p>8'10" (106") x 150' roll 1,325 SF For 9' Fence</p>	<p>Over 2,500 SF Under 2,500 SF</p> <p>Over 2,500 SF Under 2,500 SF</p> <p>Over 2,500 SF Under 2,500 SF</p> <p>Over 2,500 SF Under 2,500 SF</p>	<table border="1" style="border-collapse: collapse; width: 100%;"> <tr> <td style="text-align: center;">\$105</td> <td style="text-align: center;">19¢/SF</td> </tr> <tr> <td style="text-align: center;">\$115</td> <td style="text-align: center;">21¢/SF</td> </tr> <tr> <td style="text-align: center;">\$165</td> <td style="text-align: center;">18¢/SF</td> </tr> <tr> <td style="text-align: center;">\$185</td> <td style="text-align: center;">21¢/SF</td> </tr> <tr> <td style="text-align: center;">\$210</td> <td style="text-align: center;">18¢/SF</td> </tr> <tr> <td style="text-align: center;">\$235</td> <td style="text-align: center;">21¢/SF</td> </tr> <tr> <td style="text-align: center;">\$235</td> <td style="text-align: center;">18¢/SF</td> </tr> <tr> <td style="text-align: center;">\$265</td> <td style="text-align: center;">20¢/SF</td> </tr> </table>	\$105	19¢/SF	\$115	21¢/SF	\$165	18¢/SF	\$185	21¢/SF	\$210	18¢/SF	\$235	21¢/SF	\$235	18¢/SF	\$265	20¢/SF
\$105	19¢/SF																	
\$115	21¢/SF																	
\$165	18¢/SF																	
\$185	21¢/SF																	
\$210	18¢/SF																	
\$235	21¢/SF																	
\$235	18¢/SF																	
\$265	20¢/SF																	

Reinforced top and bottom with selvaged edges, 90% Wind Block, 4-year limited Warranty. Available in: Green and Black, Royal Blue, Navy Blue, Tan, Brown, Maroon, Orange, Red, White, Grey (add10% on Red, White or Grey). White, Grey Orange, Maroon, & Red only available in 5'8" height. Additional options include: top & bottom edging & grommets, or custom sized with edging & grommets on all four sides as shown on right, Call for quote.



<p>3'8" (44") x 150' (24 lbs.), 550 SF - For 4' Fence</p> <p>5'8" (68") x 150' (36 lbs.), 850 SF - For 6' Fence</p> <p>7'8" (92") x 150' (50 lbs.), 1,150 SF - For 8' Fence</p> <p>7-1/2" UV-Resistant Black Plastic Ties (Packs of 100)</p> <p>8" Heavy-Duty UV-Resistant Black Plastic Ties (Packs of 100)</p> <p>#60 Nylon Lacing Twine (300' Roll)</p>	<table border="1" style="border-collapse: collapse; width: 100%;"> <tr> <td style="text-align: center;">\$105</td> <td style="text-align: center;">19¢/SF</td> </tr> <tr> <td style="text-align: center;">\$135</td> <td style="text-align: center;">16¢/SF</td> </tr> <tr> <td style="text-align: center;">\$195</td> <td style="text-align: center;">17¢/SF</td> </tr> <tr> <td style="text-align: center;">\$10</td> <td></td> </tr> <tr> <td style="text-align: center;">\$15</td> <td></td> </tr> <tr> <td style="text-align: center;">\$20</td> <td></td> </tr> </table>	\$105	19¢/SF	\$135	16¢/SF	\$195	17¢/SF	\$10		\$15		\$20	
\$105	19¢/SF												
\$135	16¢/SF												
\$195	17¢/SF												
\$10													
\$15													
\$20													



ALL PRICES SUBJECT TO CHANGE & AVAILABILITY PLUS SHIPPING

DISTANCE BANNERS**WINDSCREEN LETTERS, NUMBERS & LOGOS ON VINYL WINDSCREEN**

Choose standard block lettering or Custom Lettering & Custom Logos

STANDARD BLOCK LETTERING:Digitally printed letters or numbers on **ArmorMesh, VCM 9x12, or VCP1800** vinyl mesh windscreen. Select from 14 standard colors: Green, Royal Blue, Red, Navy, Gray, Maroon, Sky Blue, Purple, Yellow, White, Tan, Black, Kelly Green, or Orange. Custom colors available.

	WHITE	NON-WHITE OR MULTI-COLOR
8" high letter or number	\$19	\$24
10" high letter or number	\$22	\$28
12" high letter or number	\$24	\$30
14" high letter or number	\$25	\$32
18" high letter or number	\$30	\$37
24" high letter or number	\$32	\$41
30" high letter or number	\$40	\$49
36" high letter or number	\$46	\$56
42" high letter or number	\$55	\$65
48" high letter or number	\$65	\$75
54" high letter or number	\$75	\$88
60" high letter or number	\$88	\$100
72" high letter or number	\$98	\$112
84" high letter or number	\$112	\$125



- Call for pricing on custom lettering and logos.
- Many other standard font styles are available.
- Baseball logo can be added in place of an "O" at the price of a letter.
- Lettering will be centered on panels 6'H or smaller unless otherwise specified.
- On panels larger than 6'H, lettering will be centered on top half (above lacing lip) unless otherwise specified.
- Artwork requirements: File formats: eps, vector, tif, or high resolution pdf (300 dpi or greater & CMYK color mode).
- Please remember to add the price of the windscreen or vinyl banner fabric for the total price.
- Minimum letter or number printing charge \$260 (one color), \$315 (two or more colors).

CUSTOM LOGOS	WHITE	NON-WHITE OR MULTI-COLOR
Up to 15 sq.ft. (e.g. 3'x5')	\$275	\$325
Up to 30 sq.ft. (e.g. 5'x6')	\$350	\$400
Up to 50 sq.ft. (e.g. 5'x10')	\$495	\$600

Note: For larger sizes, call for quote

ALL PRICES SUBJECT TO CHANGE & AVAILABILITY PLUS SHIPPING

DISTANCE BANNERS

CUSTOM DISTANCE BANNERS



Heavy-duty solid vinyl banners are custom made with your homerun fence distances. White vinyl & edging. Banners are 32" x 32" with white baseball or yellow softball with red stitching, grommets and 14" high black numbers.

Specify Distance. Allow 2-4 weeks for delivery.

K50548 (Baseball)	\$95
K50549 (Softball)	\$95



HORIZONTAL COLORED DISTANCE BANNERS



Available with or without foot indicator.
Please specify when ordering.

VERTICAL COLORED DISTANCE BANNERS
12" numbers on 56" H x 20" W banner.

13457	\$85
-------	-------------

Horizontal and vertical distance banners in heavy-duty 13 oz./sq. yd reinforced solid vinyl. Attach to fence through grommets in the banner. Banner fabric and numbers are available in 14 standard colors: Green, Royal Blue, Red, Navy, Gray, Maroon, Sky Blue, Purple, Yellow, White, Tan, Black, Kelly Green, or Orange. Custom colors available.
Specify banner color, number color, distance, and

(24" numbers on 38" x 56" banner)	
13456	\$115
(14" numbers on 27" x 36" banner)	
13407	\$95

ALL PRICES SUBJECT TO CHANGE & AVAILABILITY PLUS SHIPPING

BEAM CLAY®

TuffPrint™ on Vinyl Windscreen



TUFFPRINT™

TuffPrint™ products will last...and make a lasting impression!

Give your gyms, fields and budgets that finishing touch! Adding lettering or logos is an attractive and affordable way to promote your team's spirit or a sponsor's name to raise funds. TuffPrint™ allows for printing colors of all spectrums — from simple one-color lettering to intricate images of multiple colors and shading — and sizes of all scales—from a small banner, to a fully padded gym wall, to large stadium wraps. With all machinery and printers on site, we are able to pay careful attention to each step of the printing and manufacturing process.

Features:

- Ultra-durable imaging using Premium Ink
- Unlimited color selection and gradient shading
- Best pricing in the industry. All printing done in-house
- Proofs sent for approval prior to printing



ALL PRICES SUBJECT TO CHANGE & AVAILABILITY PLUS SHIPPING

TuffPrint™ on White Fabric

TuffPrint™ on White Vinyl Fabric for Banners & Wall Padding

1. Select your printable fabric - ArmorMesh, Standard Mesh, or Solid Vinyl.
2. Customer sends mascot, team name, colors, photos, etc. as vector files, eps, tif, or high-resolution pdf files (300 dpi or more). Or we can provide an image at additional charge.
3. Upon receipt of order, we send proof to customer.
4. Customer provides changes.
5. Additional proofs are provided if necessary.
6. Final proof is approved by customer via e-mail or fax.
7. Production begins. Completed product typically ships 2-4 weeks after proof approval.



Pricing for TuffPrint™

1 color to full color printing on white - for banners and wall padding:

8 oz. White Vinyl Mesh	\$3.40/sf
13 oz. Solid White Vinyl	\$4.00/sf
18 oz. Solid White Vinyl	\$4.75/sf
14 oz. White ArmorMesh	\$3.95/sf
MINIMUM ORDER	\$275

PLEASE REMEMBER to add the price of vinyl/mesh fabric for the total price.

IMPORTANT: Please remember for banners: Price is for printing one side—backside remains white.



WARRANTY TuffPrint™ printing warranty: the life of the cover.

ALL PRICES SUBJECT TO CHANGE & AVAILABILITY PLUS SHIPPING

BEAM CLAY®

Fundraising with TuffPrint™ Banners

Fundraising Is Easy With TuffPrint™ Banners!

1. Form a sponsorship committee
2. Designate volunteers to scout sponsors in your community.
3. Offer sponsorships at three - four times the cost of the banner. Present the options to stores and businesses. Obtain artwork from secured sponsors and have us create the banners.
4. Watch your field come to life with images that represent your community, and see your budget grow!

TuffPrint™ Banners

Customize designs for multiple locations! It is easy and affordable to boost team spirit, raise funds through sponsors and make your field stand out! Digitally printed banners allow you to customize your designs with multiple colors and shading. Choose from our mesh or vinyl fabrics for a banner of any size. We can reproduce your logo precisely from your digital image – just send us your file and we'll do the rest!

Banner Material

8 oz. Vinyl Mesh, 13 oz. Solid Reinforced Vinyl or 18 oz. ArmorMesh.



ALL PRICES SUBJECT TO CHANGE & AVAILABILITY PLUS SHIPPING

ALLSPORT™ DUGOUT SHELTERS

Portable or permanent weather protection from rain, wind and UV sunlight.

Set-up or take-down fabric roof and wall panels in minutes. The durable aluminum frame will last for years.

Features:

- Solid vinyl, waterproof roof and tight mesh sidewalls that breathe and shed water
- Weighted breakaway back panel reduces wind load, prevents damage and keeps dugout from flipping
- Roof and wall panel attach with bungee balls and Velcro web loops allowing for quick set-up and take-down
- Aluminum alloy frame is light enough to carry or cart from field to field and includes weights for stabilization
- Two foam padding sections for front poles
- Includes team name on roof front with up to 14 (10") one color letters
- Optional: TuffPrint™ custom wall panels with school name, logo, sponsors or ads
- Optional ground sleeves with adaptor and cap for in-ground installation
- Sizes: 15' (fits 2 benches) or 23' (fits 3 benches) units (benches not included)



Complete Dugout Shelter—15' Long (5' wide)	\$2,095
Complete Dugout Shelter—23' Long (5' wide)	\$2,495

OPTIONS:

2 Printed Side Walls—15' Long Model	\$175
1 Printed Side Walls—15' Long Model	\$90
1 Printed Back Wall—15' Long Model	\$250
2 Printed Side Walls—23' Long Model	\$175
1 Printed Side Walls—23' Long Model	\$90
1 Printed Back Wall—23' Long Model	\$350
Ground Sleeves/Adaptor & Cap (set of 4) (for in-ground installation)	\$165

SOLID VINYL ROOF COLORS:



Maple Green, Royal Blue, Red, Navy Blue, Gray, Maroon, Sky Blue, Purple, Yellow, White, Tan, Black, Kelly Green, Orange

MESH SIDE PANEL COLORS:



Forest Green, Royal Blue, Black, Red, Navy Blue, Orange, Maroon, Carolina Blue, Brown, Tan, Purple, Kelly Green, White, Gray, Yellow

ALL PRICES SUBJECT TO CHANGE & AVAILABILITY PLUS SHIPPING